

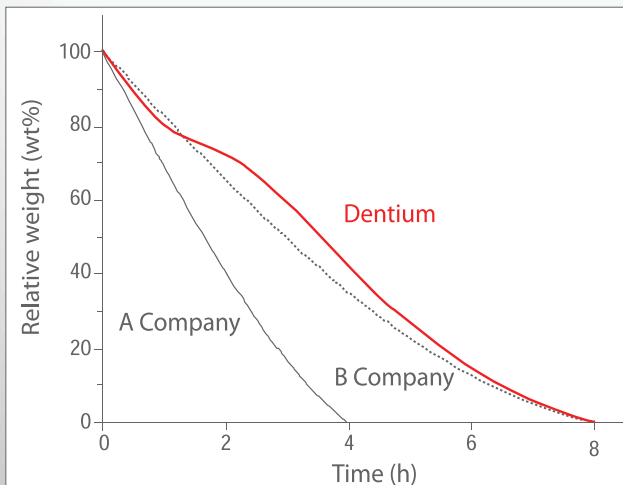
# Dentium

## Total Solution for Sinus Graft Surgery

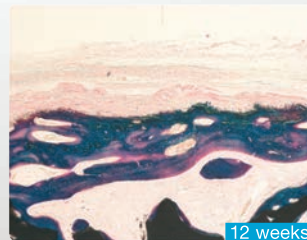
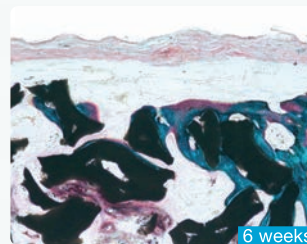
### Collagen Membrane

Biodegradable barrier membrane for guided bone / tissue regeneration

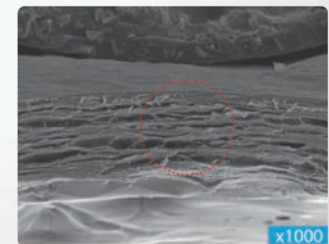
Degradation characteristics in collagenase solution



Animal Test  
(Rabbit Calvaria Model)



SEM Image of Membrane



### Characteristics of Collagen Membrane

- Highly pure type 1 collagen derived from bovine tendon sourced in New Zealand.
- Thin membrane (300 $\mu$ m) with multiple layers for easy manipulation and good mechanical strength in surgery.
- Resorption period provides enough time for stabilizing graft materials and supporting bone growth.
- Dual-sided usage

#### Contact Information

# Dentium

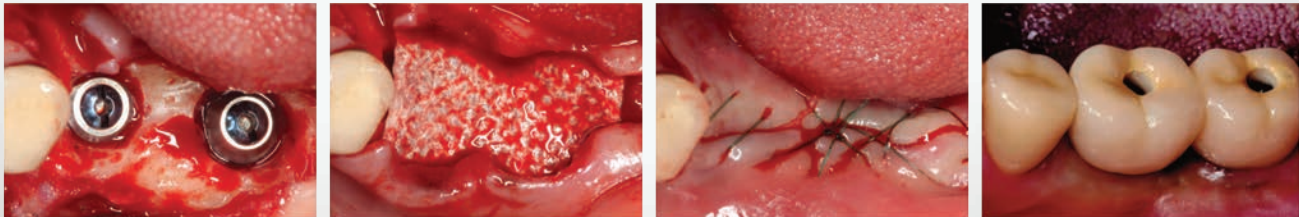
## Total Solution for Sinus Graft Surgery

### Collagen Membrane

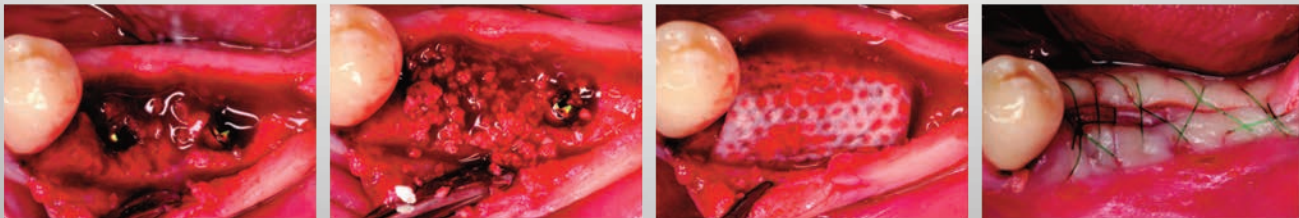
Biodegradable barrier membrane for guided bone / tissue regeneration

#### Clinical Case

##### GBR



##### GBR



#### Products Information

Product	REF	Size (mm)	Thickness (mm)
Collagen Membrane	GCM1020	10 X 20	0.3
	GCM1520	15 X 20	
	GCM2030	20 X 30	



#### TOTAL SOLUTION FOR SINUS GRAFT SURGERY

##### DENTIUM IMPLANT SYSTEMS:

Implantium and SuperLine

##### DASK (Dentium Advanced Sinus Kit)

##### BONE GRAFT MATERIALS:

Osteon™ Bone Graft Material

Osteon™ II Bone Graft Material

