



Jun 20, 2002
Pre-op



Jul 02, 2002
Post-op



Nov 29, 2002
Final Prosthesis



Aug 22, 2003
9 months

10 years
of
Long-term data



Jun 02, 2004
1 year 7 months



Nov 15, 2007
5 years



Jul 24, 2009
7 years



Dec 13, 2012
10 years



DENTIUM provides **PREDICTABILITY** based on **EVIDENCE**

10 YEARS HISTORY of Consistent Implant Design with S.L.A. (Sandblasting with Large grit and Acid etching) Surface, Excellent Bone Preservation.



EFFICIENCY through **SIMPLICITY**

Single abutment connection is used for all implant diameters (Implantium and SuperLine).
One abutment screw fits all abutments and fixture platforms.

DentiumUSA
Developed by Clinicians for Clinicians

LOS ANGELES OFFICE / MFG

6731 Katella Ave. Cypress, CA 90630 | TEL. 1-714-226-0229 | FAX. 1-714-226-0019

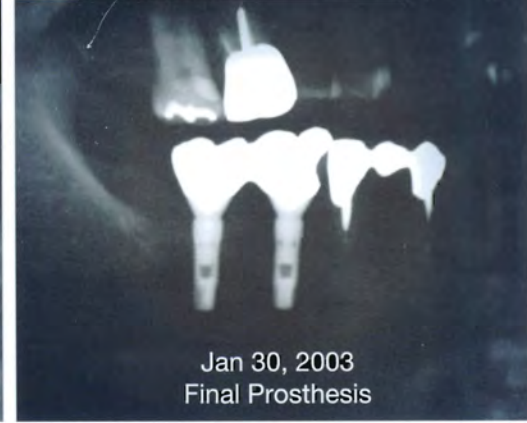
NEW JERSEY OFFICE

180 Sylvan Ave. IFL Englewood Cliffs NJ 07632 | TEL. 1-201-402-1390 | FAX. 1-201-731-3042

WEBSITE / E-MAIL

www.dentiumusa.com | cs@dentiumusa.com

PN 2918-2



10 years
of
Long-term data



DENTIUM provides **PREDICTABILITY** based on **EVIDENCE**

10 YEARS HISTORY of Consistent Implant Design with S.L.A. (Sandblasting with Large grit and Acid etching)
Surface, Excellent Bone Preservation



EFFICIENCY through **SIMPLICITY**

Single abutment connection is used for all implant diameters (Implantium and SuperLine).
One abutment screw fits all abutments and fixture platforms.

DentiumUSA
Developed by Clinicians for Clinicians

LOS ANGELES OFFICE / MFG

6731 Katella Ave. Cypress, CA 90630 | TEL. 1-714-226-0229 | FAX. 1-714-226-0019

NEW JERSEY OFFICE

180 Sylvan Ave. 1FL Englewood Cliffs NJ 07632 | TEL. 1-201-402-1390 | FAX. 1-201-731-3042

WEBSITE / E-MAIL

www.dentiumusa.com | cs@dentiumusa.com

PN 2918-2